

# *Alanté*

BY GOLDEN  
**Owner's Manual**



***Alanté™ GP201SS and GP201CC***



YOUR LIFE IN MOTION

401 Bridge Street,  
Old Forge, PA 18518  
Tel: 800-624-6374 Fax: 570-451-7494  
[www.goldentech.com](http://www.goldentech.com)

## **NOTES**

## **FOR YOUR RECORDS**

Please fill in your Alante'™ information below. This information will be useful in the event that you ever need to contact Golden Technologies, Inc. concerning your power chair.

Your Alante'™

Model: Alanté GP201                      Serial Number \_\_\_\_\_  
Date of Purchase \_\_\_\_\_              Body Color \_\_\_\_\_  
Options \_\_\_\_\_

The Golden Technologies Dealer where you purchased this product:

Name \_\_\_\_\_

Company \_\_\_\_\_

Address \_\_\_\_\_

Please remember to fill in and return your warranty registration card found at the back of this manual.

# CONTENTS

|  |              |
|--|--------------|
| <b>INTRODUCTION.....</b>                                     | <b>5</b>     |
| <b>SAFETY.....</b>   | <b>6-10</b>  |
| <b>EMI/RFI .....</b>   | <b>11</b>    |
| <b>SPECIFICATIONS.....</b>                                   | <b>12</b>    |
| <b>ASSEMBLY.....</b>   | <b>13-18</b> |
| <b>DISASSEMBLY.....</b>                                      | <b>19</b>    |
| <b>COMFORT SETTINGS.....</b>                                 | <b>20-23</b> |
| <b>OPERATION.....</b>  | <b>24-30</b> |
| <b>DIAGNOSTICS.....</b>                                      | <b>31</b>    |
| <b>CARE AND MAINTENANCE .....</b>                            | <b>32-33</b> |
| <b>RIDING YOUR ALANTE<sup>™</sup>.....</b>                   | <b>34-35</b> |
| <b>WARRANTY/REGISTRATION FORM/ADDITIONAL<br/>INFORMATION</b> | <b>36</b>    |

## INTRODUCTION

Congratulations on the purchase of your new Golden Alante´™ power chair! The Alante´ combines cutting edge technology with attractive designs that are also highly functional in today's world. We at Golden Technologies know that you have chosen a power chair that will give you years of dependable operation and will also enhance the quality of your life by providing you with the mobility to experience a more active daily lifestyle.

Even though your new Alante´ is both user-friendly and designed for maximum maneuverability in even the tightest spaces, we ask that you please read, understand and follow all of the instructions and suggestions in this manual before you operate your Alante´ for the first time. The safe use of your new power chair is very important and starts with you.

If you feel uncomfortable with your new Alante´ or do not understand the instructions presented in this owner's manual, or if, for any reason, you do not feel capable of performing the activities necessary to assemble, disassemble, operate, or maintain your Alante´, please contact the home health care dealer you purchased this power chair from or contact:

**Golden Technologies technical support services at 800-624-6374.**

### DISCLAIMER

**Golden Technologies, Inc. is not and cannot be held responsible for any damage or injury incurred due to improper or unsafe use of the Golden Alante´ Power Chair. Golden Technologies, Inc. specifically disclaims responsibility for any bodily injury or property damage that may occur during any use that does not comply with applicable federal, state, or local laws or ordinances.**

Please fill out and mail the enclosed warranty registration card. We at Golden Technologies Inc would appreciate hearing about your experience with your new Alante´ Power chair!

Please mail your warranty card to:

**Golden Technologies, Inc.  
Warranty Registration Office  
401 Bridge Street  
Old Forge, PA 18518**

**Stop by our website 24 hours a day!!!**  
[www.goldentech.com](http://www.goldentech.com)

## SAFETY

Your Golden Alante´™ is a battery-operated personal mobility vehicle. Please exercise caution and consideration when you are operating it. Driving your Alante´ carefully and thoughtfully will help ensure your personal safety and the safety of other people.

**Note: Before learning to operate your Alante´, have your Golden Technologies, Inc. representative determine if it is advisable for you to practice getting on and off your Alante´ and operating it in the presence of an attendant.**

### **BEFORE getting on your Alante´**

- Check to be certain that the power is turned OFF. See “Operation” section on pag 24. This will eliminate the possibility of accidentally activating the joystick controller and causing injury to you or to others.
- Check to be certain that your Alante´ is not in the freewheel mode. See the “Operation” section on page 27.
- Flip up the armrests.
- If your chair is equipped with leg rests, move them to the sides.
- If your chair is equipped with a footrest, flip it to the “up” position.

### **Getting ON your Alante´**

- Be careful not to entangle yourself in the leg rests or the footrest, seat yourself comfortably and securely on the seat.
- Adjust the leg rests or flip down the footrest.
- Flip down the armrests.
- Fasten the lap belt.

### **Getting OFF your Alante´**

- Make certain that the power is turned off.
- Unfasten the lap belt.
- Flip up the armrests.
- Flip up the footrest, or move the leg rests to the sides.
- While being careful not to entangle yourself in the leg rests or the footrest, carefully stand and step away from the chair.

### **MAXIMUM WEIGHT**

**Your Alante´ has been rated to a maximum payload (passenger and anything else being carried on the Alante´) of 300 pounds. Exceeding the maximum weight rating will void the warranty.**



**WARNING Exceeding the maximum weight rating may also result in injury to you and to others. When getting on or off your Alante´, do not put most of your weight on the footrest. Raise the footrest during transfer. Standing on the footrest may cause the chair to tip.**

## SAFETY Cont.

### DRIVING ON AN INCLINE

- Drive with caution when attempting to negotiate any incline, even handicap access ramps.
- **Always** climb or descend a gradient by driving forward straight up or straight down the face of the slope.
- **Do not** traverse or drive across the face of a gradient.
- **Do not** attempt to negotiate an incline that is covered with snow, ice, cut or wet grass, leaves, or any other potentially hazardous material.
- **Do not** back down an incline.
- Try to keep your Alanté™ moving when climbing an incline. If you do come to a stop, restart and accelerate slowly and carefully.
- **Do not** try to descend or climb a slope that is greater than 6 degrees.



**WARNING** IF, WHILE YOU ARE DRIVING DOWN A SLOPE, YOUR POWER CHAIR STARTS TO MOVE FASTER THAN YOU FEEL IS SAFE, RELEASE THE JOYSTICK CONTROLLER LEVER AND ALLOW YOUR ALANTE' TO COME TO A STOP. WHEN YOU FEEL THAT YOU AGAIN HAVE CONTROL OF YOUR POWER CHAIR, PUSH THE JOYSTICK CONTROLLER LEVER FORWARD AND CONTINUE SAFELY DOWN THE REMAINDER OF THE SLOPE.

### DRIVING DOWN AN INCLINE



**WARNING**  
**Always** drive forward down any ramp, low rise, or incline.

Golden Technologies, Inc. does not recommend that you drive your power chair in reverse down any incline, ramp, curb, or low rise. Backing down any slope may create a very hazardous situation.

### RULES FOR USE AND OTHER SAFETY CONSIDERATIONS

#### MEDICATION

Always check with your physician to determine if any of the medications you are taking may affect your judgment and/or your ability to operate your Alante'. Also check with your physician concerning your physical ability to operate a power chair.

## SAFETY Cont.

**Note:** Please remember that while on your Golden Alanté™, you are a motorized pedestrian. You must observe and obey all pedestrian rules and regulations for the locale in which you are riding.



WARNING

**TURNING TOO SHARPLY AROUND A CORNER CAN CAUSE THE POWER CHAIR TO TIP. AVOID THIS DANGER AT ALL TIMES BY STEERING A WIDE ARC AROUND CORNERS AND OBSTACLES. ALSO, TO AVOID THE RISK OF TIPPING, REDUCE SPEED BEFORE NEGOTIATING ANY TURNS.**



WARNING

**DO NOT CONNECT OR ALLOW ANYONE EXCEPT AN AUTHORIZED GOLDEN TECHNOLOGIES REPRESENTATIVE TO CONNECT ANY ELECTRICAL OR MECHANICAL DEVICE TO YOUR ALANTE'. UNAUTHORIZED ACCESSORIES WILL VOID THE WARRANTY AND MAY CAUSE INJURY.**



WARNING

**FOR EMERGENCY STOPPING, PRESS THE ON/OFF BUTTON ON THE CONTROLLER ONCE AND THE POWER CHAIR WILL STOP.**



WARNING

**NEVER TRANSFER ONTO OR OFF OF THIS POWER WHEELCHAIR USING THE SEAT BACKREST FOR SUPPORT DURING TRANSFER. THE SEAT BACK FOLDS DOWN EASILY AND MAY CAUSE YOU TO LOSE YOUR BALANCE AND COULD RESULT IN PERSONAL INJURY. ALSO, THE SEAT SWIVEL MUST BE LOCKED BEFORE TRANSFERRING.**

*Please use your Golden Alante' power chair often and allow it to expand the horizons of your daily life. But as with all things, especially motor operated vehicles, observing a few rules and safety considerations will help ensure safe power chair operation. So please follow the rules on the following page.*

## SAFETY RULES

- **Do not** attempt to use your Alanté™ on an escalator. Always use an elevator.
- **Do not** carry passengers on your power chair.
- **Do not** operate your Alante´ if it is not functioning properly.
- **Use caution** when driving on soft or uneven surfaces such as grass, gravel and on decks where there is no railing.
- **Never** drive on the roadway, except when you must cross the street.
- Cross streets at intersections and use the most direct route, making sure that your path is clear and that you are visible to motor traffic.
- **It is not recommended** to drive your Alante´ up or down a step or curb that is higher than 1-1/2 inches.
- **Never** back up or down a step or curb.
- **Never** operate your Alante´ while you are under the influence of alcohol.
- **Do not** operate or store your power chair where it will be exposed to rain, snow, mist or below-freezing temperatures.
- **Do not** operate your power chair on slippery, icy or salted surfaces.
- **Never** sit on your power chair when it is in freewheel mode and on an incline or decline.
- **Never** place your power chair into freewheel mode without a trained attendant present.
- **Do not** modify your power chair in any way that is not authorized by Golden Technologies, Inc.

## SAFETY RULES Cont.

- **Do not** disassemble the tire. If disassembly is required, have your authorized Golden Technologies dealer perform any necessary maintenance or repair.
- **Do not** attempt to inflate the tires of your Alante™. Your power chair is equipped with foam-filled flat free tires that do not require inflation.



**Figure 1**

## EMI / RFI

The rapid development of electronics, especially in the area of communications, has saturated our environment with electromagnetic (radio) waves that are emitted by television transmitters, cellular phones, citizen's band radios (CBs) amateur radios (HAM radios), wireless computers links, microwave transmitters, paging transmitters, etc. These electromagnetic (EM) waves are invisible and increase in strength the closer one gets to the source of transmission. When these energy waves act upon electrical devices and cause them to malfunction or to function in an erratic or uncontrolled manner, they are referred to as Electromagnetic Interference (EMI) or Radio Frequency Interference (RFI).

### EMI / RFI AND YOUR ALANTE<sup>®</sup>™

All electrically powered vehicles, including power chairs are susceptible to EMI / RFI. This interference could result in abnormal or unintended movement of your Golden Alante<sup>®</sup>.

The FDA has determined that each make and model of power chair can resist EMI/RFI to a certain level. The higher the level of immunity, the greater the degree of protection from EMI/RFI measured in volts per meter (V/m). The FDA has also determined that current technology is capable of providing 20 V/m of immunity to EMI/RFI, which would provide useful protection against common sources of interference.

Based on that determination, the FDA has written to the manufacturers of power wheel-chairs and asked them to test their new products to be certain that they provide a reasonable degree of immunity to EMI/RFI. The FDA suggests that power chairs should have an immunity level of 20 V/m. The resistance level of the Golden Alante<sup>®</sup> is unknown.

### EMI / RFI RECOMMENDATIONS

- Do not turn on or use hand-held personal electronic communication devices such as cellular phones, walkie-talkies, or CB radios while your power chair is turned on.
- Be aware of any nearby transmitters (radio, television, microwave, etc.) on your intended route and avoid operation your of power chair close to any of those transmitters.
- Turn off the power if your Alante<sup>®</sup> is going to be in a stationary position for any length of time.
- Be aware that adding accessories or components or modifying your power chair may make it more susceptible to EMI / RFI.
- If unintended movement or brake release occurs, turn your power chair off as soon as it is safe to do so.
- Report all incidents of unintended movement or brake failure to your Golden Technologies representative or to Golden Technologies.



**WARNING TURN OFF YOUR POWER CHAIR AS SOON AS IT IS SAFELY POSSIBLE IF UNINTENDED OR UNCONTROLLABLE MOTION OCCURS OR IF UNINTENDED BRAKE RELEASE OCCURS.**

## SPECIFICATIONS

| Model                              | Alante™ GP201SS and GP201CC                   |
|------------------------------------|---|
| <b>Weight</b>                      |   |
| Base                               | 82 Pounds                                     |
| Seat                               | 24 Pounds                                     |
| <b>Overall Dimensions</b>          |   |
| Length                             | 40 Inches                                     |
| Width                              | 25.5 Inches                                   |
| Seat Height                        | 20-23 Inches – adjustable                     |
| <b>Maximum Speed</b>               | 6 Miles Per Hour                              |
| <b>Load Capacity</b>               | 300 Pounds                                    |
| <b>Turning Radius</b>              | 29 Inches                                     |
| <b>Wheel Sizes</b>                 |   |
| Drive Wheels                       | 10 Inches                                     |
| Casters                            | 6 Inches                                      |
| <b>Seat Dimensions</b>             |   |
| Armrest Width<br>(adjustable)      | 18-24 Inches                                  |
| Backrest Height                    | 16 Inches                                     |
| W/D                                | 18x16 Inches                                  |
| Footrest<br>(height<br>adjustable) | 3-7 Inches                                    |
| <b>Joystick Controller</b>         | Dynamic A-Series Integral 50 Amp Programmable |
| <b>Charger</b>                     | Off-board charger                             |
| <b>Colors</b>                      | Candy Apple Red, Cobalt Blue                  |
| <b>Battery Type</b>                | Two (2) U1 sealed lead acid or two (2) NF22   |

*\*Specifications subject to change without notice.*

## ASSEMBLY

Your Alante™ is shipped partially disassembled in order to maximize the protection of all its parts during the shipping process. Please follow the instruction below to quickly and easily assemble the power chair for your use.

**NOTE: You will need only basic tools. If you do not have the required tools, or if you do not feel capable of safely assembling your power chair, please contact your local Golden Technologies, Inc. representative.**

### Tool List

1. 13mm combination wrench
2. Two 10mm open or combination wrench
3. 6mm hex socket key
4. 4mm hex socket key
5. ¼ inch hex socket key

### Main Components

1. Base frame with connector for battery and motor cables
2. Shroud
3. Seat Assembly with lap belt
4. Joystick controller
5. Batteries (2) (must purchase separately)
6. Battery Cables



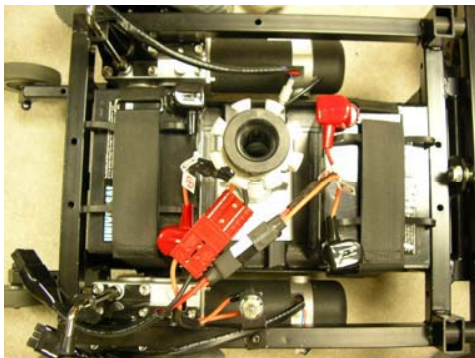
**Figure 2**

## ASSEMBLY Cont.

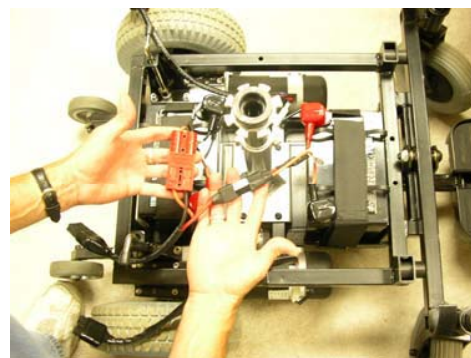
### BATTERY INSTALLATION

**Note: Each battery weighs 25 to 39 pounds each (depending on type). Please ask for help if you do not feel capable of safely lifting that much weight.**

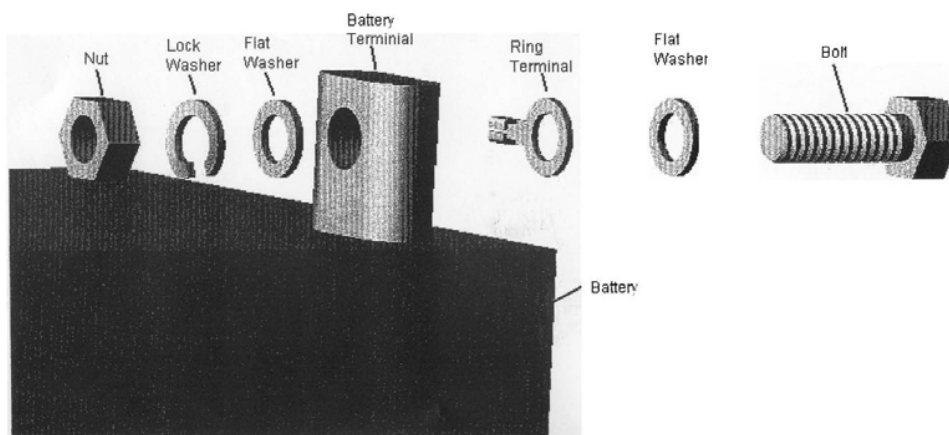
1. Place the batteries in the frame. Be certain that you position the positive (+) terminal of each battery opposite to the negative (-) terminal of the other battery. See Figure 3.
2. Use the screws, washers and nuts provided to connect the positive (red) connector of each cable to the positive (+) terminal of each battery. See Figure 5.
3. Use the screws, washers and nuts provided to connect the negative (black) connector of each cable to the negative (-) terminal of each battery.
4. Connect the connectors of each battery cable to the corresponding connector on the battery wire harness. See Figure 3
5. Cover the battery terminals with the protective caps provided. See Figure 4.
6. Fasten batteries with the Velcro™ straps.



**Figure 3**



**Figure 4**



**Figure 5**

## ASSEMBLY Cont.

### BATTERY REPLACEMENT

Should a battery need replacement, please contact your Golden Technologies dealer where you purchased this product. The batteries in your Golden Alante™ are specialized deep cycle batteries. Do not replace the deep cycle batteries with an automotive style battery or serious damage may occur and vehicle performance may be dangerously impaired.

### SHROUD INSTALLATION

1. Remove the white backing from the shroud supports at the front of the frame. See Figure 6.
2. With the shroud to the side of the unit, feed the joystick controller cable through the center hole in the shroud. See Figure 7.
  - A. Make the joystick controller connections as shown in Figure 8.
3. Position the shroud above the frame.
  - A. The center hole should be positioned above the seat post.
  - B. The slots in the shroud should be positioned over the freewheel levers. The freewheel levers should be in the locked position.
4. Lower the shroud onto the frame and press it firmly into place.



Figure 6



Figure 7



Figure 8



Figure 9

## ASSEMBLY Cont.

### SEAT INSTALLATION

**NOTE:** The seat assembly weighs approximately 24 lbs. without armrests. Please ask for help if you do not feel capable of safely lifting that much weight.

1. While holding the seat rotation lever (see Fig. 11) in the up position, lift the seat and insert the seat post stem (located on the bottom of the seat) into the seat-post. See Figure 10.
2. Swivel the seat from side to side, push down on it and release the seat rotation lever until the seat locks in place.



Figure 10

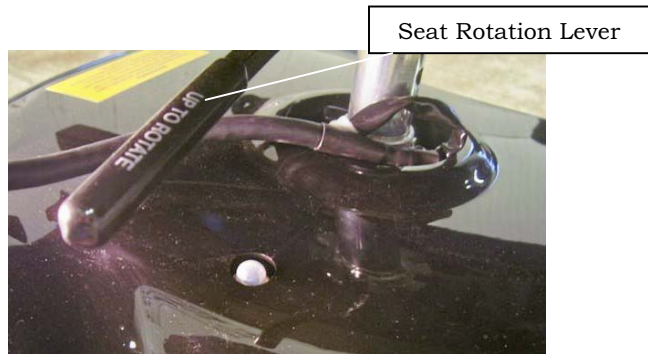


Figure 11

### LAP BELT INSTALLATION

- 1) Remove the two arm adjustment knobs (Figure 12).
- 2) Put the screw end of the arm adjustment knob through the mounting hole in the latch side of the lap belt.
- 3) Screw the knob into the weld nut on the right side of the arm mounting tube on the rear seat frame.
- 4) Put the other screw through the mounting hole of the buckle side of the lap belt.
- 5) Screw the knob into the weld nut on the left side of the arm mounting tube on the rear seat frame.
- 6) Once the arms are in place, tighten the knobs.



Figure 12

Arm Adjustment Knob

## ASSEMBLY Cont.

### ARM INSTALLATION

- 1) Loosen (but do not remove) the arm width adjustment knobs at the rear of the seat frame.
- 2) Insert the lower arm tube into the arm receiver at the rear of the seat frame. (Figure 13)



Figure 13

Lower Arm Tube



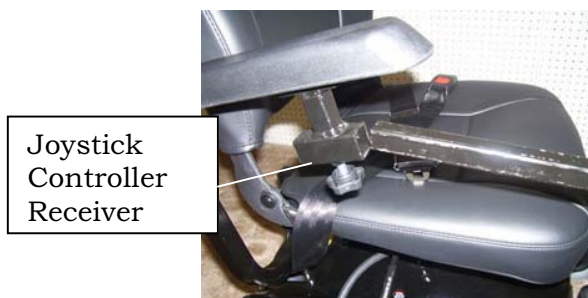
**WARNING** Be sure the arm pad is facing forward when the armrest is in the down position.

- 3) Find a comfortable width and tighten the knob.
- 4) Repeat on the opposite side of the unit.

**NOTE:** When the arm adjustment knobs are tight, the lap belt mounting plates will be free to move around the arm adjustment knobs.

### JOYSTICK CONTROLLER INSTALLATION

- 1) With the seat installed and arms secured in place, slide the joystick controller extension arm into the joystick controller receiver. Fig. 13
- 2) Find a comfortable position for the joystick controller and secure controller receiver.



Joystick  
Controller  
Receiver

Figure 14

Joystick  
Controller  
Extension  
Arm



Figure 15

## ASSEMBLY Cont.

- 3) Route the joystick controller cable to the inside of the armrest and secure into place with the Velcro™ straps as shown. Figs. 16 & 17.



**Figure 16**



**Figure 17**

## DISASSEMBLY



**WARNING** Make certain that the joystick controller power is turned off and that the chair is **NOT** in freewheel mode before attempting to perform disassembly.

### SEAT REMOVAL

- 1) Remove the Velcro™ straps that secure the joystick controller cable. (Fig. 16)
- 2) Remove the joystick controller by loosening the adjustment knob under the joystick controller receiver. (Fig. 17) Slide the joystick controller and extension arm forward and out of the receiver. Carefully lay the joystick controller beside the power chair.
- 3) Fold the seat back down.
- 4) Remove the arms.
- 5) Lift and hold the seat rotation lever upwards to release the seat. (Fig. 11)
- 6) With the seat swivel lever held up, grasp the seat on both sides and lift straight up. You may swivel the seat side to side to make the seat easier to remove.
- 7) Carefully lift the shroud over the brake release levers and place on side of Alanté (Fig. 7).
- 8) Disconnect joystick controller connections and feed connections through the center hole in the shroud.
- 9) Unfasten Velcro® straps on batteries.
- 10) Disconnect battery cables from main wire harness.
- 11) Lift batteries out of the base and place on the side of the unit.

## COMFORT SETTINGS

You may be spending a great deal of time on your Alante<sup>™</sup>. To provide you with the maximum seating comfort, Golden Technologies, Inc. has designed this power chair to incorporate the following adjustments for operator comfort.

### COMFORT SETTINGS

- |    |                |    |                            |
|----|----------------|----|----------------------------|
| 1) | Seat height    | 4) | Footrest height            |
| 2) | Armrest angle  | 5) | Footrest extending         |
| 3) | Footrest angle | 6) | Joystick controller length |



**WARNING** Make certain that the power to your Alante<sup>™</sup> is turned off before making any adjustments, to eliminate the risk of the joystick controller being accidentally bumped and activating the power chair.

### SEAT HEIGHT ADJUSTMENT

- 1) Remove the seat.
- 2) Remove the shroud
- 3) Disconnect the joystick controller.
- 4) Use two wrenches to remove the nut, washers and bolt that secures the seat post in place.
- 5) Adjust the inner seat pedestal to the desired height
- 6) Insert the bolt through the matching holes in the seat post and the seat post pedestal.
- 7) Install the washers removed in Step 4.
- 8) Install and tighten the nut removed in Step 4.
- 9) Connect the joystick controller
- 10) Replace the shroud.
- 11) Attach the seat.



The Alanté seat post height can be adjusted by moving the location of the bolt and washers in the seat post as shown at left.

## COMFORT SETTINGS Cont.

### ARMREST ANGLE ADJUSTMENT

- 1) Flip up the armrest.
- 2) Loosen the jam nut on the armrest upright. See Figure 18.
- 3) Adjust the screw height upward or downward to reach the desired arm rest angle.
- 4) Tighten the jam nut.

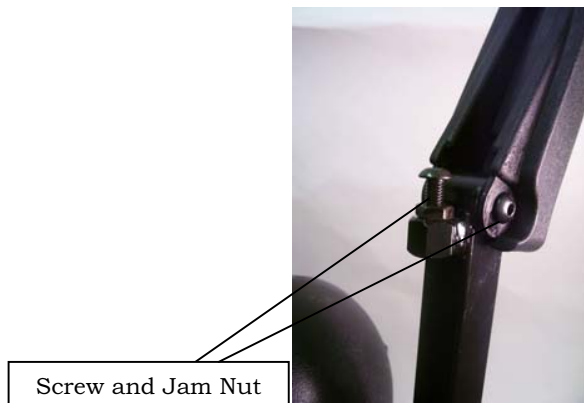


Figure 18

### FOOTREST ANGLE ADJUSTMENT

- 1) Fold the footrest upward for easy access to the footrest adjustment screw. See Figure 19.
- 2) Loosen the jam nut.
- 3) Use a wrench to turn the adjustment bolt counter-clockwise to increase the footrest angle.
- 4) Use a wrench to turn the adjustment bolt clockwise to decrease the footrest angle.

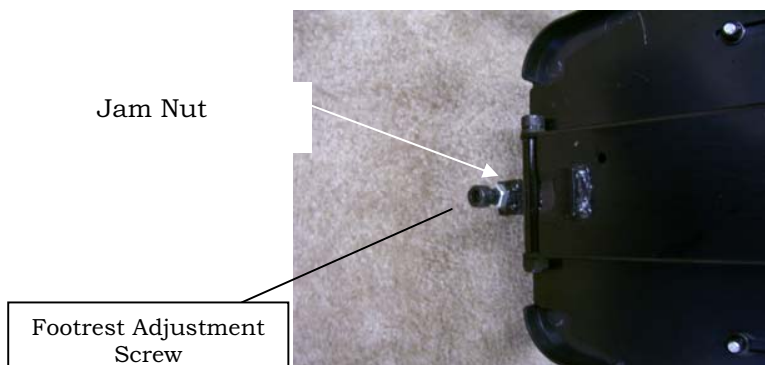


Figure 19

## COMFORT SETTINGS Cont.

### FOOTREST HEIGHT ADJUSTMENT

- 1) Remove the shroud
- 2) Use an Allen™ wrench to remove the bolts indicated in Figure 20.
- 3) Slide the footrest to the desired height.
- 4) Align the bolt holes in the footrest and the footrest bracket.
- 5) Install and tighten the bolts.



Figure 20

### FOOTREST EXTENDING

- 1) Lift the rubber pad from the footrest plate.
- 2) Loosen the two (2) footrest adjustment screws.
- 3) Slide the footrest plate to the desired position and tighten the adjustment screws.

**NOTE: The maximum extended length is not at the end of the slots.**



Figure 21

## COMFORT SETTINGS Cont.

### FOOTREST EXTENSION OPTION

- 1) Place the footrest extension onto the footrest as shown below.
- 2) Install the footrest extension bolt.
- 3) Install a lock washer and locknut on the bolt and tighten securely.
- 4) Tighten the set screw.



Figure 22



Figure 23

### JOYSTICK CONTROLLER BRACKET LENGTH

- 1) Loosen the knob at the underside of the joystick controller receiver.
- 2) Loosen and unwrap the Velcro® straps holding the controller cord in place.
- 3) Slide the joystick controller extension arm forward or rearward to find a comfortable position.
- 4) Tighten the knob at the underside of the joystick controller receiver to secure the joystick controller extension arm.
- 5) Route the joystick cable to the inside of the armrest and secure in place with the Velcro® straps.

## OPERATION

Your Alante´™ is simple to operate. However, for your safety and the safety of others, Golden Technologies, Inc. recommends that you carefully read and understand the following operating instructions. We also recommend that you practice operating your Alante´™ in an area free of any obstacles. Once you have gained confidence in your ability to control your power chair, you will more easily be able to operate it in normal daily conditions.

### A WORD OF CAUTION

Before turning on the power of your Alante´, take note of your environment and set your speed control accordingly. (see “Speed Control Buttons” Figure 25) For indoor driving, we recommend that you select the lowest speed setting. For outdoor driving, we recommend that you select a speed setting at which you feel comfortable, safe, and in control of your power chair. Familiarize yourself with the features of your Alante´ described below and follow the instructions to safely operate your power chair.

### Joystick Controller Display

The joystick controller display (See Figure 25) is a multifunctional visual display. This display provides three types of information.

- 1) On/Off status
- 2) Battery charge level
- 3) Fault diagnostics

#### 1. On/Off Status

When you turn on the power to your Alante´, the LED array will light up (see Figure 25).

To turn the power on, press the on/off button (see Fig. 25).

To turn the power off, press the on/off button (see Fig. 25)

◆ If the LED array is not lit, the joystick controller and the power chair are not in operating mode.

## OPERATION Cont.

### 2. Battery Charge Level

The joystick controller LED array is composed of eight (8) LED's.

- ◆Two (2) red
- ◆Two (2) amber
- ◆Four (4) green

When all eight (8) LEDs are lit continuously, there is a full charge on the batteries. As you use your power chair and the batteries discharge, LEDs in the array will begin to turn off in descending order. A single lit red LED indicates the lowest state of operable charge on the batteries. The batteries should be charged immediately.

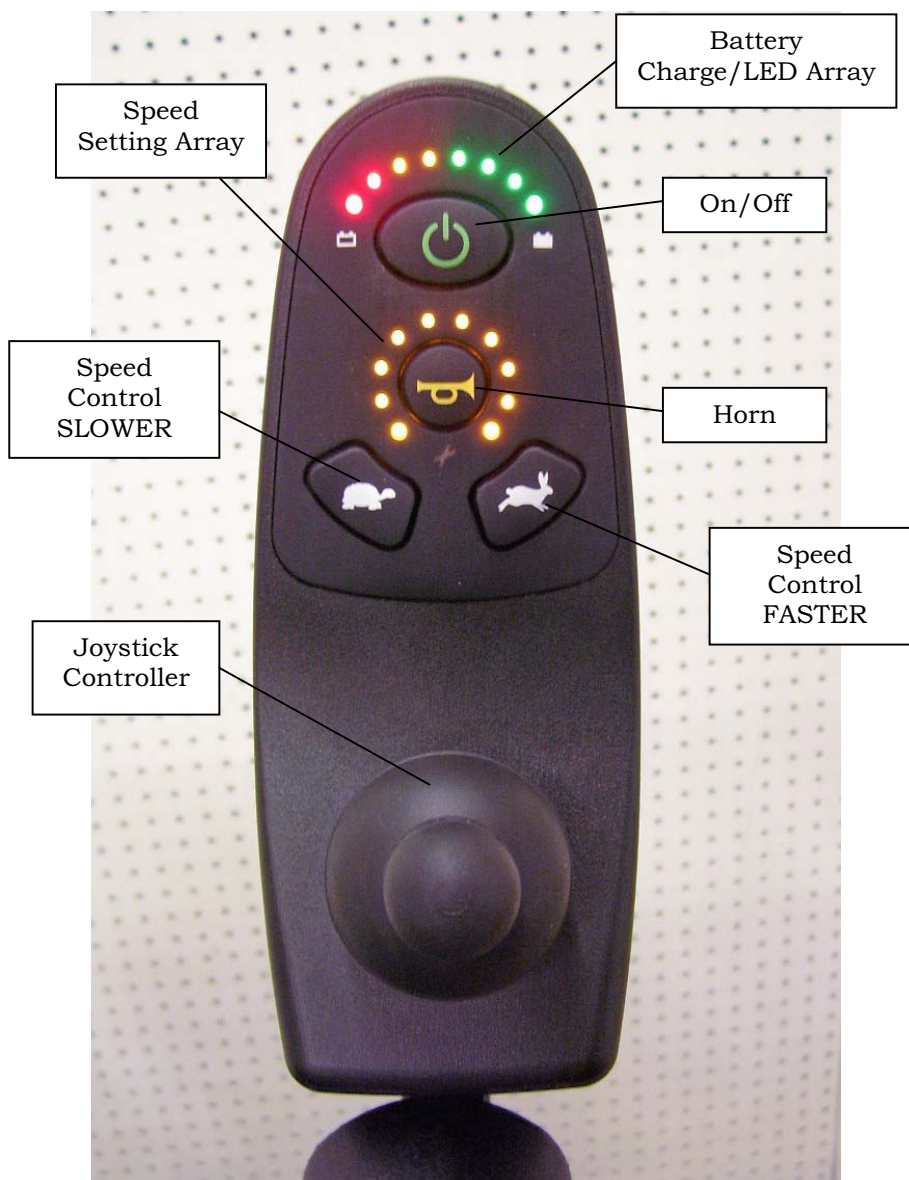


Figure 25

## **OPERATION Cont.**

**NOTE:** To ensure a dependable battery charge, we recommend that you charge the chair's batteries overnight. Doing this will prolong the life of the batteries and spare you loss of operational power while you are using your chair normally. Do not charge the batteries when all 8 LEDs are lit, indicating that the batteries are at full charge. Charging the batteries when they are fully charged will shorten the life of the batteries.

## OPERATION Cont.

### FREEWHEEL MODE

- ◆ To disengage the gears and put your power chair in freewheel mode, turn the brake release levers outward. See Figure 26.
- ◆ To re-engage the gears and take your chair out of freewheel mode, turn the levers rearward. See Figure 27.



Figure 26

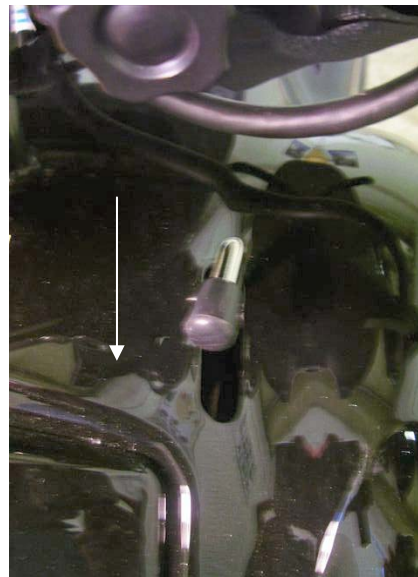


Figure 27



### WARNING

1. **Never put your power chair in freewheel mode when it is on a slope or incline of any type.**
2. **Never put your power chair in freewheel mode while you are operating your power chair.**
3. **Never put your power chair in freewheel mode without a trained attendant present.**

### THERMAL ROLLBACK

Your Alante´ is equipped with a safety system. A microprocessor monitors the operating temperatures of the joystick controller. In the event of excessive heat occurring in the joystick controller, the joystick controller will decrease the speed of your chair. This is done to reduce the load on the electrical system and allow the components to dissipate heat. The joystick controller will automatically set the chair's speed back to full normal when the operating temperature returns to normal levels.

## OPERATION Cont.

### THE MAIN CIRCUIT BREAKER

The main circuit breaker is another safety feature incorporated into your Alante<sup>®</sup>. This device monitors the amount of current being drawn from the batteries when the chair is in use. When the motors are heavily strained and too high a current draw is being placed on the batteries, the main circuit breaker will trip and bring your chair to a stop. The main circuit breaker reset button is located on the top right of the shroud.

### RESET BUTTON

If the main circuit breaker trips, please wait for approximately 1 minute and then push the reset button to reset the main circuit breaker. Fig. 28.

**NOTE: Usually, the thermal rollback feature is more sensitive than the main circuit breaker. We recommend that you turn off the power to the chair and wait for five minutes when the chair suddenly loses speed or power. Doing so will allow the overheated electrical components to cool to their normal operating temperatures.**

### SEAT ROTATION

The seat of your Alante<sup>®</sup> can be swiveled to one of five preset positions.

1. Full forward
2. 45 degrees to the right
3. 45 degrees to the left
4. 90 degrees to the right
5. 90 degrees to the left

#### To swivel the seat:

1. Pull up on the seat rotation lever (see Figure 28) to swivel the seat.
2. Release the lever.
3. The seat will lock in one of the five preset positions.
4. Continue this process until the seat is positioned as you want it.
- 5.



Figure 28

## OPERATION Cont.



**WARNING** Do not drive your power chair with the seat in any position other than full forward, locked position.

### OPERATIONAL RANGE

Depending on the use, the terrain, and the driving conditions, the batteries of your Alante´™ will provide up to 20 miles of operation.

We recommend that you charge the batteries when necessary. Battery charge should be treated similarly to fuel in a car.

### CHARGING THE BATTERIES

Your Alante´'s charging system is designed for your safety and for your convenience. Follow the steps below to recharge the batteries.

1. Position your Alante´ close to a standard wall electrical outlet.
2. Turn off the power on the joystick controller.
3. Remove the charger from the trunk.
4. Insert the matching charger plug into the joystick controller's charging socket that is located at the front of the joystick controller.  
See Figures 29 & 30.



**Figure 29**



**Figure 30**

## OPERATION Cont.

5. Insert the plug at the other end of the charger power cord into a standard electrical wall outlet.
6. Disconnect the charger power cord from the wall outlet and from the joystick controller charging socket when the batteries are fully charged.

**NOTE: The batteries will be fully charged in four to eight hours. A full charge is indicated when the green light on the battery charger side panel turns on and all 8 joystick controller LEDs are lit when joystick controller is turned on.**



**WARNING** Your charger will become hot to the touch during normal charging cycles. Please exercise caution when handling a battery charger during and just after charging your batteries. Allow the charger ample time to cool before handling.



**WARNING** Always place your charger on a heat resistant surface while charging your batteries. Allow ample air circulation around your charger while charging your batteries.

## DIAGNOSTICS/TROUBLESHOOTING

The joystick controller LED display is designed to help you diagnose any problems with the electrical components of your power chair. The LED display does this by flashing on and off in a coded sequence. Below is a list of trouble-shooting actions. Try to use this list before you contact your Golden Technologies representative. Go to the number in the list which matches the number of flashing bars and follow the instructions. If the problem persists after you made the checks described, contact your Golden Technologies representative for further assistance.

Flash Codes indicate the nature of an abnormal condition directly from the A-Series Information Gauge. Without the use of any servicing tools, the condition can be simply diagnosed.

| Flash Code | Description                       |   |
|------------|-----------------------------------|---|
| 1          | User Fault                        | Possible stall timeout or user error. Release the joystick controller to neutral and try again. |
| 2          | Battery Fault                     | Check the batteries and cabling. Try charging the batteries. Battery may require replacement.   |
| 3          | Left Motor Fault                  | Check the left motor, connections and cabling.  |
| 4          | Right Motor Fault                 | Check the right motor, connections and cabling.   |
| 5          | Left park brake fault             | Check the left park brake, connections and cabling.   |
| 6          | Right park brake fault            | Check the right park brake, connections and cabling.  |
| 7          | User Interface Fault              | Display PCB fault. Consult service agent.   |
| 8          | Joystick controller Fault         | Consult service agent.  |
| 9          | A-Series Bus Communications Fault | Consult service agent.  |

### DIAGNOSTICS

**Controllers are not user serviceable. Specialized tools are necessary for the repair of any A-Series component.**

**A flashing A-Series Information Gauge indicates there is an abnormal condition somewhere on the power chair. The components that A-Series provides fault information for include the motors, the park brakes, the batteries, the cabling and the A-Series modules themselves.**

## CARE AND MAINTENANCE

**Your Alante´™ is designed to require minimal maintenance. We recommend that you periodically check the following:**

**Tire Pressure:** Your Alante´ is equipped with flat-free, foam-filled tires. There is no need to check tire pressure.

**Tire Tread:** Regularly visually inspect the tire tread. If the remaining tread is less than 1/32 of an inch, have your local Golden representative replace the worn tires.

**Motor Brushes:** Have your local Golden representative inspect the motor brushes once a year.

**Joystick Controller:** Protect the joystick controller from adverse weather conditions. Moisture will damage the joystick controller and void your power chair's warranty.

**Battery Terminals:** Regularly inspect the condition of the battery terminals. Make certain that they are not corroded. Also check to see that the terminals are securely tightened.

**Cleaning:** Use only a water-dampened soft cloth to clean the ABS shroud. The shroud has a protective coat that is very easy to maintain.

**NOTE: Do not use free-flowing water to clean your Alante´. Water and extreme temperatures are the main elements that can adversely affect your power chair and its performance.**

**Water, Rain, Sleet, and Snow:** Water, in any form, will cause electronic malfunction or corrosion of the electrical components, connections, and the chair frame.

### Temperature

- ◆ At extremely low temperatures, the batteries of your power chair may freeze, preventing your Alante´ from operating.
- ◆ At extremely high temperatures, your power chair may operate at slower speeds due to the joystick controller's thermal rollback feature that is designed to prevent damage to the motors and to the other electrical components of the chair. See section Thermal Rollback on page 27.

## **CARE AND MAINTENANCE Cont.**

### **A Word About Motor Noise:**

The motors on your Golden Alante´™ have been selected to give you years of quiet, reliable operation. We strive to make our motors as quiet as possible, but, as with any mechanical device, some noise is normal and acceptable. Motor noise is more evident in a quiet indoor environment. The steady whir of the motors and clicking of the motor brakes assures you that your motors are operating properly. Over several years of use, you may find that your motors become slightly louder than when your vehicle was brand new. This is normal and should not affect the performance of your Alante´ and is not cause for motor replacement.



## RIDING YOUR ALANTE´™

### Control through tight spots

As you use your Alante´™ to increase your mobility, you will undoubtedly encounter some obstacles that will require practice to negotiate smoothly and safely. Below are some common obstacles that you may meet during the daily use of your power chair. Listed with those obstacles are some driving tips that should help you conquer those obstacles. Learn and follow those tips, and with surprising ease you will soon be in control of your power chair as you maneuver it through doors, up and down ramps, up and over curbs, through grass and gravel, and up and down inclines.

#### Doors

- Approach any unfamiliar door slowly.
- Notice if the door has a knob or a push bar.
- Determine if the door opens towards you or away from you.
- Do not try to use your own strength to open the door. Learn to use the power of your power chair to do the majority of the work for you.

#### If the door opens away from you:

1. Use one hand to turn the doorknob or to operate the push bar.
2. Use your other hand to steer the power chair and to gently press on the joystick that will move your power chair slowly forward.
3. Use your arm to push the door gently open.
4. Drive through the doorway.
5. If it is a self-closing door, it will close behind you.
6. If it is not a self-closing door, stop your power chair when it is clear of the door and use your hand to push the door closed.

#### If the door opens towards you:

1. Use one hand to turn the doorknob or to pull the handle.
2. Keep your grip on the knob or on the handle.
3. Use your other hand to steer your power chair and to gently press the joystick that will move your power chair slowly in reverse.
4. Allow the power of your Alante´ to pull the door completely open.
5. When the door is completely open, stop your power chair.
6. Drive through the doorway while keeping your hand on the door to prevent it from hitting or blocking your power chair.
7. If it is a self-closing door, it will close behind you.
8. If it is not a self-closing door, pull it closed behind you.

## **RIDING YOUR ALANTE'™ Cont.**

### **Ramps**

Because of the American Disabilities Act (ADA), many buildings are fitted with ramps that provide access for power chairs and for other mobility vehicles.

**Please read and thoroughly understand “Safety Rules” and “Driving On An Incline” sections of this manual. (Pages 6-10)**



**Consumer Limited Warranty**  
***Power Wheelchairs***  
**Effective June 1, 2008**

**The following warranty is granted only to the INITIAL Consumer who has purchased our product and commences on the Date of Purchase by the Consumer from an Authorized Golden Technologies' Provider. The Consumer must have a warranty registration card filed with Golden Technologies to receive service. This warranty supersedes all previous warranties for all power chair models effective June 1, 2008.**

**The warranty covers the following power wheelchair models unless otherwise noted:**

- ◆ Alero GP52
- ◆ Alanté GP202
- ◆ Alanté Jr. GP200
- ◆ Compass GP600 and GP601
- ◆ Alanté GP201

***Limited Lifetime Warranty:***

In the event of defective materials or workmanship, Golden Technologies will repair or replace at our option any of the following **structural frame components** found to be defective by an authorized Golden Technologies representative:

- ◆ Steel Frame
- ◆ Frame Welds
- ◆ Seat Post

*The chair side frames for the Alero GP52 power wheelchair are guaranteed for a period of FIVE YEARS from the date of purchase.*

***One-Year Limited Warranty:***

For the period of one year from the date of purchase, in the event of defective materials or workmanship, Golden Technologies will repair or replace at our option any of the following **structural frame components** found to be defective by an authorized Golden Technologies representative:

- ◆ Caster Beam
- ◆ Anti-Tip Forks
- ◆ Caster Forks
- ◆ Armrests
- ◆ Footrest
- GP-52 Only**
- ◆ Swing-away footrests
- ◆ Cross Braces
- ◆ Back Rest Canes

For the period of one year from the date of purchase, in the event of defective materials or workmanship, Golden Technologies will repair or replace at our option any of the following **drive train components** found to be defective by an authorized Golden Technologies representative:

- ◆ Motor/Gearbox Assembly
- ◆ Brake Assembly (electrical function only)

**Note: An increase in operating noise of the motor/gearbox DOES NOT constitute a defect. With normal wear and tear, operating noise is expected to increase.**

For the period of one year from the date of purchase, in the event of defective materials or workmanship, Golden Technologies will repair or replace at our option any of the following **electronic assemblies** found to be defective by an authorized Golden Technologies representative:

- ◆ Electronic Controller
- ◆ Battery Charger
- ◆ Wire Harness(es)  
(excludes boot covers)

**Note: While charging batteries, it is normal for the battery charger to heat up. Heat coming from the battery charger DOES NOT constitute a defect.**

## **Consumer Limited Warranty** ***Power Wheelchair (continued)***

For the period of one year from the date of purchase, in the event of defective materials or workmanship, Golden Technologies will repair or replace at our option any of the following **parts** found to be defective by an authorized Golden Technologies representative:

- |   |   |   |
|---|---|---|
| <ul style="list-style-type: none"> <li>◆ Bearings</li> <li>◆ Bushings</li> <li>◆ Seat swivel mechanism</li> </ul> | <ul style="list-style-type: none"> <li>◆ Rubber Components<br/>(excludes tires and all wear parts)</li> </ul> | <ul style="list-style-type: none"> <li>◆ Plastic Components<br/>(excludes body and all wear parts)</li> </ul> |
|---|---|---|

Items not mentioned or listed are covered at the discretion of Golden Technologies. Any accessories, standard or optional, supplied by Golden Technologies, are covered for a period of one year from the date of purchase with the particular unit.

### ***Warranty Exclusions:***

Golden Technologies does not provide warranty on any of the following items which may require replacement due to the normal wear and tear of day to day usage:

- |  |   |  |
|--|---|--|
| <ul style="list-style-type: none"> <li>◆ Tires and Tubes</li> <li>◆ ABS Plastic Shrouds</li> <li>◆ Armrest Pads</li> </ul> | <ul style="list-style-type: none"> <li>◆ Motor Brushes</li> <li>◆ Bulbs/Fuses</li> <li>◆ Battery Cases</li> </ul> | <ul style="list-style-type: none"> <li>◆ Brake Pads</li> <li>◆ Upholstery</li> </ul> |
|--|---|--|

This warranty also excludes the following:

- ◆ Batteries (Please consult battery manufacturer for any implied warranty)
- ◆ Loss or theft of components
- ◆ Damage caused by:
  - Battery fluid spillage or leakage
  - Abuse, misuse, accident or negligence.
  - Improper operation, maintenance or storage.
  - Commercial use or use other than normal.
  - Repairs and/or modifications made to any part without the specific consent of Golden Technologies.
  - Exceeding the specified weight capacity of the unit.
  - Accessories other than those supplied or approved by Golden Technologies.
  - Failure to adhere to the product instructions
  - Acts of Nature, such as lightning strikes, earthquakes, etc....
  - Circumstances beyond the control of Golden Technologies.
- ◆ **ANY PARTS ALTERED OR REPAIRED BY UNAUTHORIZED PERSON.**

### ***Warranty Service:***

Warranty Service must be performed by an authorized Golden Technologies representative. Golden Technologies reserves the right to replace warranted part(s) with refurbished or new part(s) at our discretion. All labor charges, service calls, transportation costs or any other charge(s) associated with the installation of any warranted part(s) are the responsibility of the consumer. Warranty is for the replacement of the parts only and does not include freight for the replacement parts. Consumers are not to return any item(s) to Golden Technologies without prior written authorization. Any damages incurred while warranted part(s) are in transport are the sole responsibility of the consumer.

**There is no other express warranty.**

Implied warranties, including those of merchantability and fitness for a particular purpose are excluded. Liabilities for consequential damages are excluded.

This warranty gives you specific rights and you may also have other rights which may vary from state to state.

**Golden Technologies  
Product Registration Form**

***Alante'***

**Please fill out this product registration form.  
Failure to do so could result in significant delays  
should service be required.**

**Owner Information:**

**Name:** \_\_\_\_\_

**Address:** \_\_\_\_\_

**City:** \_\_\_\_\_ **State:** \_\_\_\_ **Zip Code:** \_\_\_\_\_

**Product Information:**

**Serial Number:** \_\_\_\_\_

**Purchased From:** \_\_\_\_\_

**City:** \_\_\_\_\_ **State:** \_\_\_\_\_

**Date Purchased:** \_\_\_\_\_

**Mail Completed Form To:**

**Golden Technologies  
401 Bridge Street  
Old Forge, PA 18518**

---

## Additional Required Owner Information

Please indicate your understanding of your Golden Alante™ by completing the following information.

\_\_\_\_\_ I have read and fully understand:

\_\_\_\_\_ My Golden Alante´ Owner's Manual, especially the sections on operating instructions, safety guidelines, maintenance and battery instructions.\*

\_\_\_\_\_ Alante™ Warranty

\* Battery Instructions - only sealed lead acid, GEL-cell or AGM type batteries should be used. Batteries must also be sealed, deep cycle, and maintenance free or battery will hinder vehicle performance and void the warranty.

\_\_\_\_\_ My Golden Alante™ dealer has instructed me on how to operate my power chair.

**Signature** \_\_\_\_\_

**Telephone** ( \_\_\_\_\_ ) \_\_\_\_\_

**Comments**  
\_\_\_\_\_  
\_\_\_\_\_